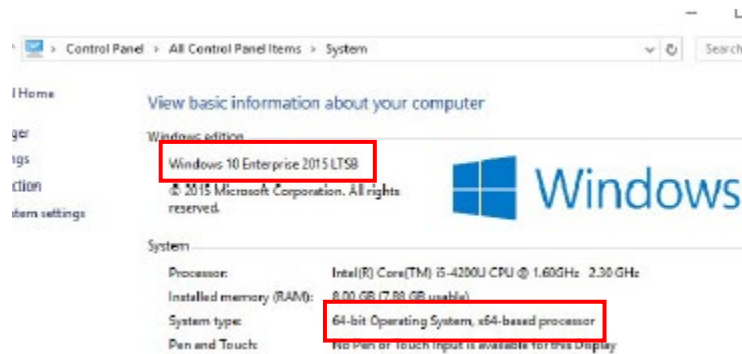


How to connect to PSU Network?

Firstly, have to check your computer spec, What is your windows version?

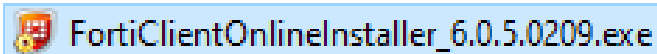


If it's the Windows 10 or 8, please download program "[FortiClient](#)"

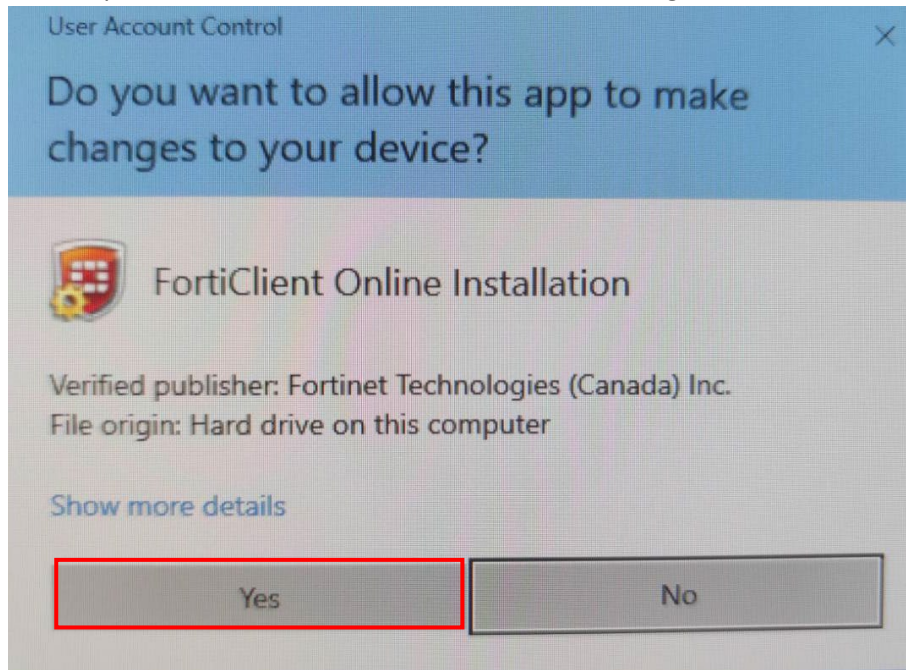


How to install FortiClient?

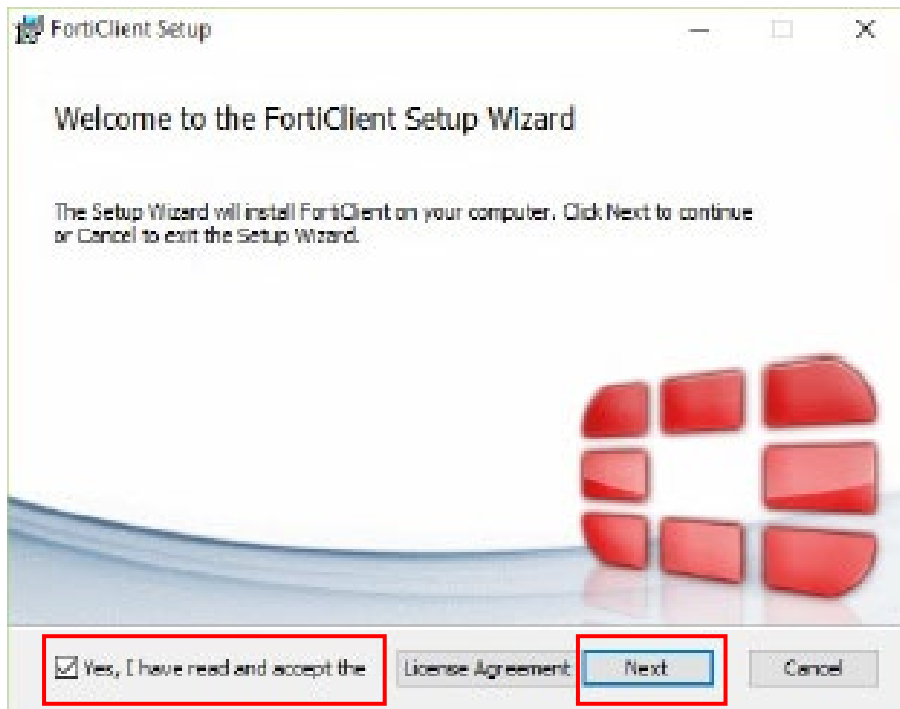
1. Double click on the program that you downloaded.



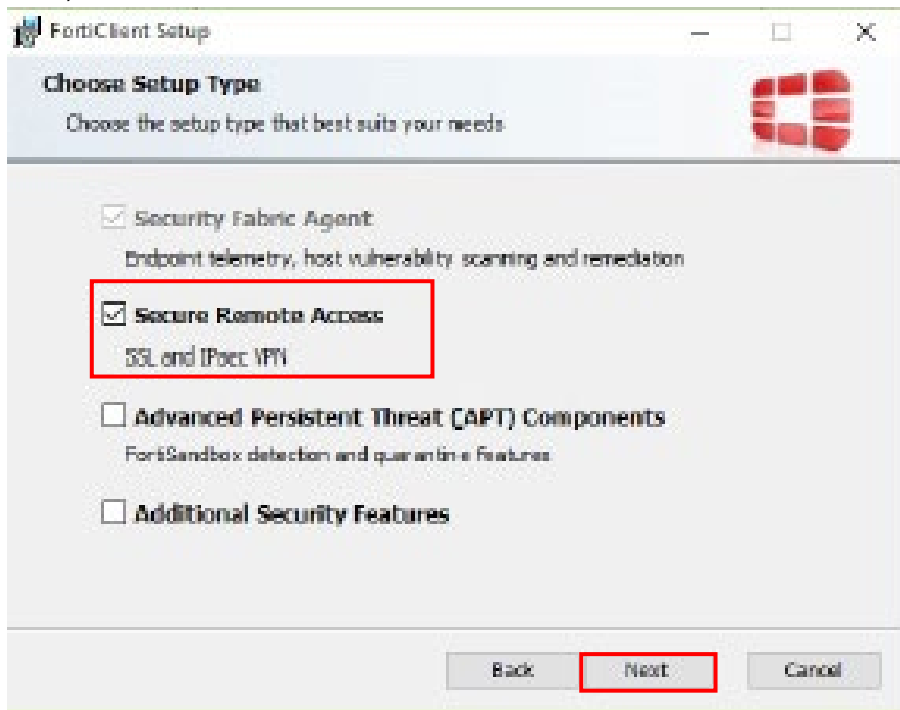
2. If a computer shows the "User Account Control" Message box, click "Yes"



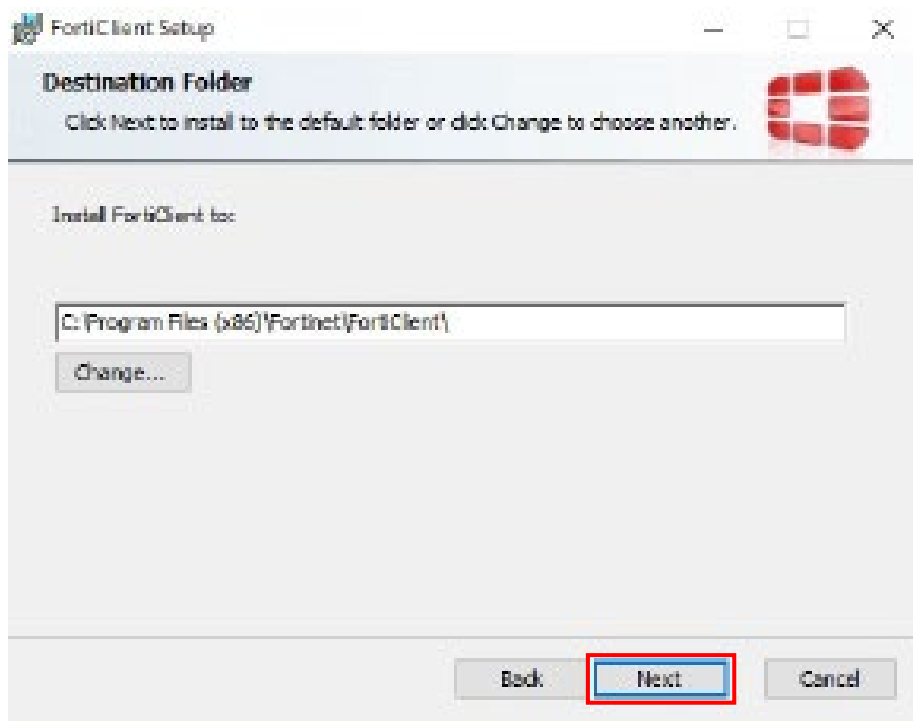
3. Then Mark on "Yes, I have read and accept the License Agreement" and click "Next"



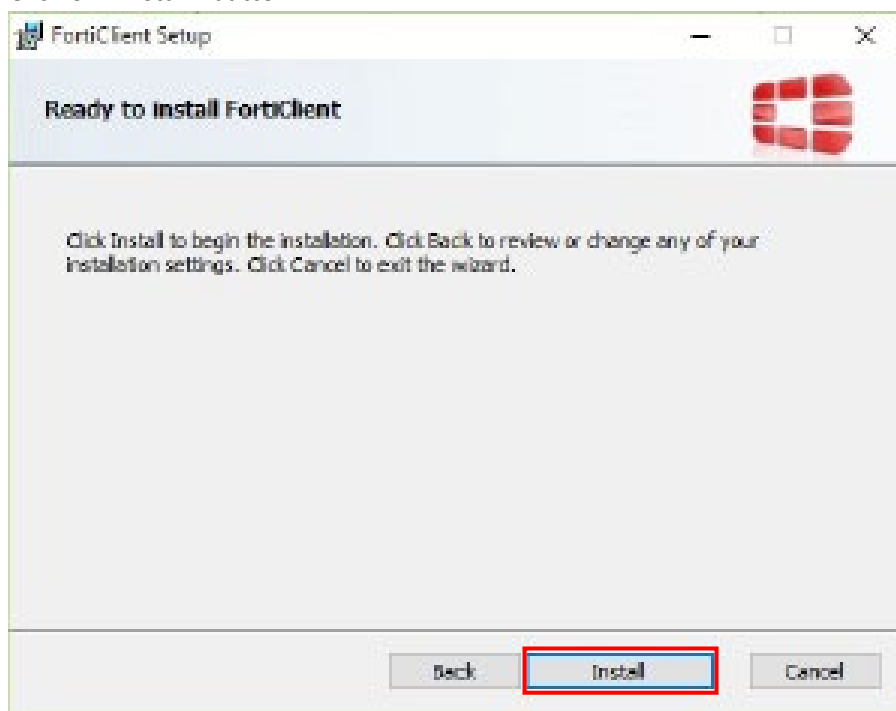
4. Then, select on "Secure Remote Access" and click "Next"



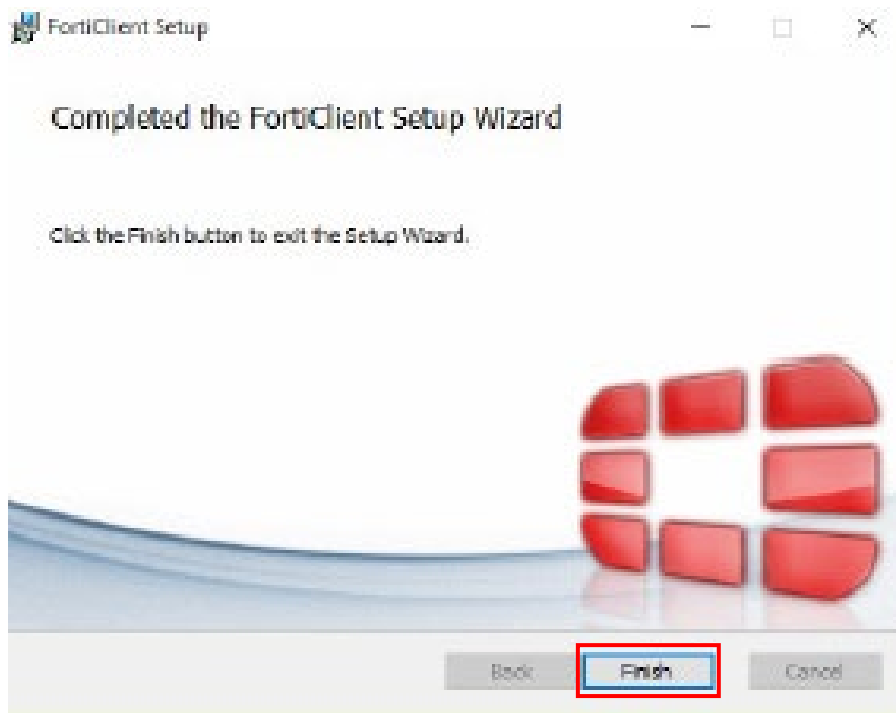
5. Click "Next"



6. Click on "Install" button.



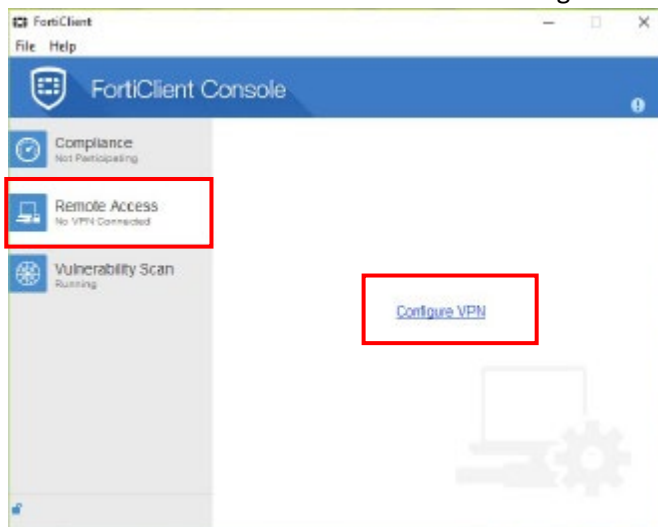
7. And wait a moment for program installation process.
8. Click on "Finish" button.



9. Then, you can see an icon of FortiClient program on your desktop. Double click for running and setting up the program.



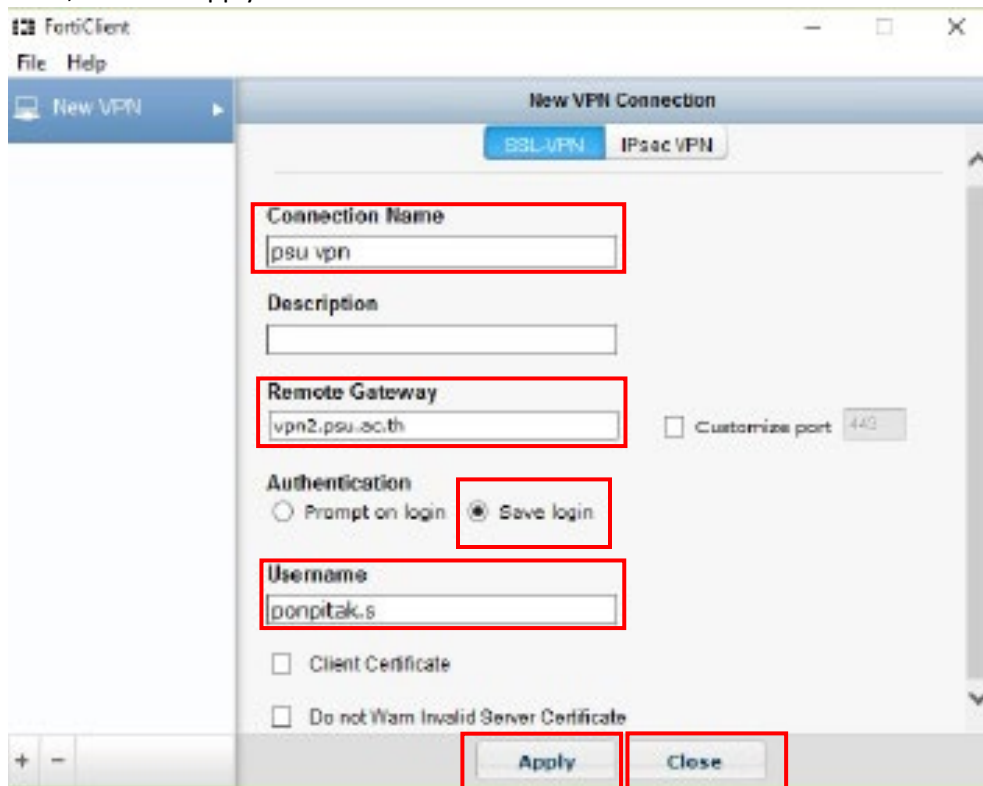
10. Select on "Remote Access" and click on "Configure VPN"



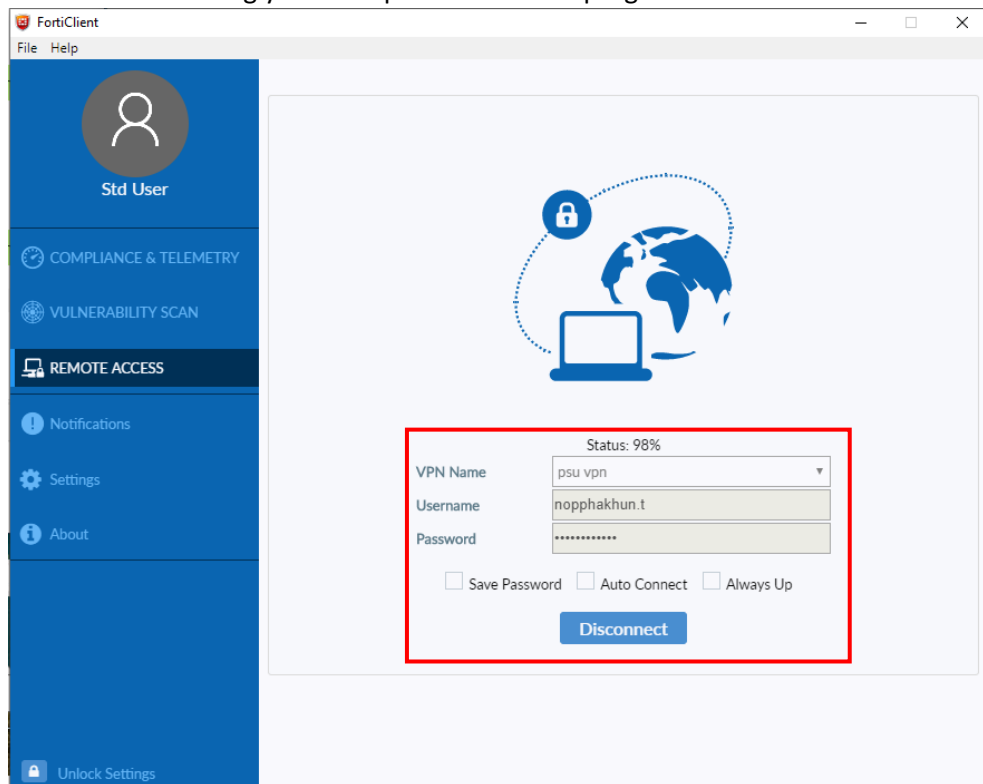
11. Fill in data and select a choice as following a details and a picture below.

- | | |
|-----------------------|-----------------------------------------|
| 11.1 Connection Name: | psu vpn |
| 11.2 Remote Gateway: | vpn2.psu.ac.th |
| 11.3 Authentication: | Save login |
| 11.4 Username: | your student ID or PSU passport account |

12. Then, click on “Apply” and “Close”



13. Try to login with your PSU passport and click on “Connect” button. You can mark on “Save Password” for saving your own password in this program.



14. If you connected the PSU network already, the program will show as the picture below. Click on “Disconnect” button, when you finish your work and would like to stop to connect the PSU network.

